

Capital Springs Newsletter

VISIT OUR WEBSITE AT
WWW.FWSP.ORG/CAPITALSPRINGS/



INSIDE THIS ISSUE... SPRING 2012

Park Improvements Update

Friends' President Matt Carlson reviews recently completed improvements, projects underway, and future developments planned for Capital Springs.

Madison Metropolitan Sewerage District (MMSD) Grant

MMSD grants \$10,000 toward interpretive projects.

Volunteer at Capital Springs

Join us! Take a Stake in the Lakes, June 1-17, National Trails Day, and Get Dirty for Dane, May 12.

Capital Springs Biking News

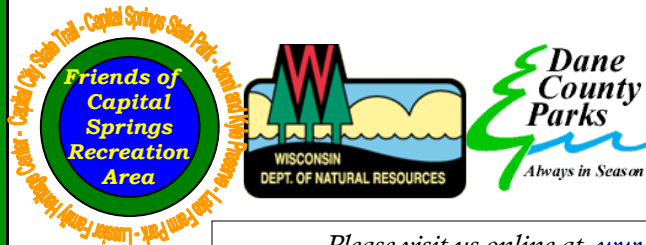
A major extension of the CCT trail in the works and more! Friends' VP Bruce Lindsay gives details.

Capital Springs Unit Spotlight: Nine Springs E-Way

We begin a new series in this newsletter, exploring the history, natural beauty, recreation, and future of a unit at Capital Springs.

The Friends of Capital Springs Remember Libby Lewis (1932-2012)

A steward for Dane County and the E-Way.



A VIEW THROUGH TIME—12,000 YEARS IN THE NINE SPRINGS AREA

An Evening with Archeologist Phil Salkin

**Featured Guest: Phil Salkin,
President of Archaeological
Consulting & Services, Inc.**

**Subject: Archeology of the Nine Springs Area
Thursday, June 14, 6:00 p.m.
Lussier Family Heritage Center
Free Admission**

The Friends of Capital Springs Recreation Area is pleased to announce that we will be hosting a free educational program in June about the unique archeological elements found within the Nine Springs area.

Mr. Salkin will provide insight about the people that lived along the shores of Lake Waubesa and the Yahara River. In particular, he will discuss what the mounds and artifacts found in the region tell us about the people who lived here and the age in which they dwelt among the waterways and forests of the Nine Springs area.

Listen to one of the most prominent experts in Wisconsin archeology who has studied this park in detail!

For information, call (608)224-3604 or visit www.countyofdane.com/lwrp/parks/heritage/ or www.fwsp.org/capitalsprings/.

Please visit us online at www.fwsp.org/capitalsprings/ and on Facebook.
Have ideas? Contact us at CapSprings@gmail.com.

PARK ACCOMPLISHMENTS AND PROJECTS

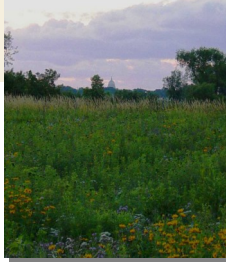
What's new at Capital Springs? By FOCSRA President Matt Carlson



There are a number of exciting projects underway and planned for the near future at the Park. The following is a short overview of what you can expect to see and enjoy during your upcoming visits to the Park (as always, please feel free to contact the Friends for additional information):

CURRENT & RECENTLY COMPLETED PROJECTS

- **Construction of Dog Exercise Area** – Underway, completion expected in late summer of 2012.
- **Construction of Disc Golf Course** – Underway, completion expected in late summer of 2012.
- **Baxter Park Trail** – Completed in late 2011! The trail is completed thanks to the partnership between the Friends Board member Dan Kerkman and Dane County staff. This trail connector, which is already heavily being used, is significant as it connects the Park to several population areas in South Madison and expedites physical access between the Park and populations that generally minimally use the Park.
- **Water Trail** – Completed in fall of 2011! Due to the work of Friends' Board member, Dan Kerkman, there is now a canoe/kayak trail cleared along the Nine Springs Creek so paddlers can travel much of the Park by canoe/kayak. The trail provides access from the Yahara Channel near beautiful Lake Waubesa all the way to the pumping station.
- **Observation Tower** – Restoration and replacement of the stairs and overlook deck at the Lake Farm Park Unit is underway.
- **Nine Springs E-Way Bridges** – Design specifications and bid documents are pending for the replacement of two bridges spanning the Nine Springs Creek.
- **New Shop and Garage to serve Park** – County is developing specifications for a multi-use shop and garage facility that will allow for the storage of equipment serving the Park, as well as prairie seed cleaning and storage.
- **Oak Savannah Restoration along Clayton Road** – Led by the Friends Board member Dan Kerkman with contributions from a number of volunteers, an oak savannah was recently restored along Clayton Road. Restoration activities included removal of invasive species—honey suckle, buckthorn, box elder—through controlled burnings and brush clearing. Over the next several years, additional oak trees will be planted as well as other prairie vegetation in adjoining areas of the Park. Stay tuned for future work days if you would like to help out.
- **Badger Rock School Outdoor Classroom Activities** – The Friends have worked with faculty and students from Badger Rock School (which is located adjacent to the Park) to develop an outdoor classroom focused on the Park. The outdoor classroom allows students to learn about the plants, animals and ecosystems of the Park, as well as to be involved in Park maintenance projects (such as maintaining trails, removing invasive species, planning native plants, etc.). They are



also engaged in monitoring bird activity in the Park. Please contact the Friends if you or your school is interested in developing a similar program at the Park.

- **Dane County Environmental Council Grant** – The Dane County Environmental Council awarded the Friends a \$1,700 matching grant to assist with the Friend's purchase of a DR Field and Brush Mower. Coupled with the Friends \$1,700 contribution, the grant will be used to acquire the mower which will be used for removing invasive species, as well as establishing and maintaining trails throughout the Park.

COMING SOON

- **Prairie Restoration Project on State DNR land near Hogg Island and southward** – late 2012/2013. Phase one of a two phased project that eventually will prepare for the development of the proposed bike trail, amphitheatre, and observation area on Hogg Island.
- **Maintenance of Water Trail** and installation of distance markers – Summer 2012.
- **Dane County and the US Fish and Wildlife Service will engage in wetland restoration** activities in the area to the Northeast of Lussier Family Heritage Center – Summer/Fall 2012.
- **Additional Invasive species removal** and restoration activities in the woods behind Lorena Parkway (adjacent to Baxter Park Trail).

FUTURE DEVELOPMENT OF THE PARK AND TRAILS BEING PLANNED AND CONSIDERED

- **Proposed expansion of the Lower Yahara River Bike Trail** – Next phase south to Stoughton.
- **Potential Construction of a bicycle trail bordering Lake Waubesa**, running south and connecting to Waucheeta Trail and Waubesa Avenue, as well as other Town of Dunn Streets.
- **Potential bicycle lanes on Lake Farm Road** for safety and improved recreational use. The road could then function as a connector route to the Park.
- **Development of the Amphitheatre** site for public enjoyment as set forth in the Master Plan.
- **Limited development of Hogg Island** in an environmentally sensitive manner in order to provide public access and enjoyment of Lake Waubesa, including possibly an observation deck, fishing area and trail access.

MADISON METROPOLITAN SEWERAGE DISTRICT (MMSD) GRANT

MMSD grants \$10,000 to FOCSRA to Help Create Interpretive Programming



In partnership with the MMSD, the Friends will develop new interpretative signage throughout the Park and offer new educational programming.

We are very excited to announce that the Friends have received a grant of \$10,000

from the Madison Metropolitan Sewerage District (MMSD) to create a collaborative partnership for interpretive programming and other projects in our Recreation Area. Our goal is to educate and engage future generations to be committed to sustaining our natural and water resources here in Dane County.

This grant will give the Friends a unique opportunity to develop environmental education programs together with MMSD. We plan to use the Lussier Heritage Center as the focus for the programming as it is used by a very large number of people each year for meetings and events.

We expect to collaborate with the County and the State to gradually build the interpretive capability of the recreation area in partnership with MMSD as we want to have visitors exposed to environmental education. We plan that some of the grant from the MMSD will allow FOCSRA to work with Dane County Parks to hire a part-time naturalist to help us work with MMSD to start this interpretive program.

In the long run, one of the most significant components of an education program is a talented, knowledgeable naturalist and eventually we hope to have a naturalist year round, who can breathe life into the Park. The naturalist could develop programs and possibly coordinate knowledgeable volunteers. We hope to work toward such a goal in years to come.

We envision an Educational and Interpretive Plan that would include:

→ **Several 3 sided Kiosks and/or smaller boards with educational information such as:**

- Water quality (e.g., phosphorus reduction)
- Birds seen in the recreation area and MMSD

→ **Interpretive Education programs such as:**

- Lake and water quality
- Native American Heritage
- Bird watching and prairie walks
- Introducing children to the recreation area

MMSD is an excellent neighbor of the Capital Springs Recreation Area and an environmentally sensitive steward of the natural resources we both cherish. The Capital Springs Recreation Area has already benefitted from an excellent relationship with the District over the years and look forward to continuing to work together.

—Article written by Judie Pfeifer, FOCSRA Treasurer



VOLUNTEER AT CAPITAL SPRINGS

By Rhea Stangel-Maier



Join us June 1-17 for the 25th Take a Stake in the Lakes to clean up our Madison lakes. Volunteer at Get Dirty for Dane for debris removal along Nine Springs Creek. Or, join us build a canoe launch during National Trails Day.

TAKE A STAKE IN THE LAKES**JUNE 1-17**

June 2012 marks the 25th year of Take a Stake in the Lakes volunteer actions to protect and improve our lakes, rivers and streams. Created by the Dane County Lakes and Watershed Commission, the annual Take a Stake in the Lakes Days event has grown from two days of shoreline clean-up to a two-week series of county-wide special events for learning about protecting and improving county lakes and streams. The event has become the flagship of volunteerism and care for our treasured waterways. Thousands of volunteers have cleaned up innumerable tons of garbage from Dane County's waterways, shorelines and more. This calls for celebration!

What's New This Year? The Clean Lakes Alliance is partnering with Dane County Lakes and Watershed Commission to expand the annual event and make it bigger and better than ever. The new partnership brings resources not otherwise available to expand the scope of work to improve water quality in Dane County.

Many of the area's largest employers will be lending staff and funds to the effort. During Jazz in the Park on June 16 at Wingra Park, past and present volunteers, donors, coordinators and commissioners are invited to come together for a day of celebration and recognition.

How Can You Participate? Here are just a few ways to be part of Take a Stake in the Lakes days:

Organize your own Take a Stake in the Lakes Event. Groups are welcome to adopt a park or shoreline.

Volunteer! Sign up with shoreline cleanup on Saturday, June 9th where we are concentrating on Lakes Mendota and Kegonsa and then on Saturday, June 16th on Lakes Waubesa, Monona and Wingra. Last year, over 700 volunteers adopted a shoreline or beach, collected litter, and raked aquatic debris from the shoreline and shallow water.

Participate in any of the fun-filled activities that are being held around our lakes this June! Many events promote awareness of the water resources in our community and how the lakes affect our lives and how we effect the lakes.

Be a Sponsor! Your donation to this event helps fund supplies

for volunteers as well as gets your name on all promotions.

Event Details: Go to www.takeastakeinthelakes.com. To participate as an individual, organization, or volunteer group, contact Rhea Stangel-Maier, Dane County Parks Volunteer coordinator, at 608-224-3601 or stangel-maier@countyofdane.com. To participate as a business or employer, contact James Tye of Clean Lakes Alliance, at 608-836-4001 or james@cleanlakesalliance.com.

GET DIRTY FOR DANE
SATURDAY, MAY 12, 2012
9:00 a.m. - 2:00 p.m.
ANDERBERG LANE

The Dane County Environmental Council (DCEC) and Recreational Equipment Inc. (REI) will be hosting Get Dirty for Dane, a day to get outdoors and participate in land stewardship projects throughout Dane County.

Join Capitol Water Trails and Friends of Capital Springs Recreation Area as we clean up Nine Springs Creek in Madison just south of the Beltline. We will be removing full blockages for better trout habitat and paddle navigation. We will also be building piers at two separate sites. You will need to supply your own watercraft, work clothes, gloves, and waders if you have them. We will supply tools and equipment needed and drinking water. This project will require paddling to a remote location and physical work. Register here, for questions, contact Capitol Water Trails at cwt@capitolwatertrails.org.

Questions: call 608-224-3601 or e-mail Rhea at stangel-maier@countyofdane.com. To learn more about Capitol Water Trails, visit them at: www.capitolwatertrails.org.

NATIONAL TRAILS DAY EVENT
SATURDAY, JUNE 2, 2012
9 a.m. - 12:00 noon
1947 MOORLAND ROAD

Volunteers are invited to help build a canoe launch along the Nine Springs Creek. The event is sponsored by the Friends of Capital Springs and Fontana Sport Specialties.

For further details and to sign up contact: Rhea Stangel-Maier 608-224-3601 stangel-maier@countyofdane.com.

CAPITAL SPRINGS BIKING NEWS

Friends' VP Bruce Lindsay provides details for biking enthusiasts.



A major extension of the CCT to McFarland is in the works, the IMBA donates \$5,000 towards a mountain bike trail at Dawley Park, look for CCT biking jerseys this year, and more!

NEW TRAILS

If you haven't heard already, the **Capital City Trail (CCT)** was connected by a spur trail to Baxter Park in late fall 2011. This trail connector is already being heavily used and connects new bicyclists from several population areas in South Madison to the CCT and other areas of the Park. In addition, volunteers have been **busy this spring removing invasives** along the CCT, targeting Clayton Road. If you are interested in helping out, contact FOC-SRA at capsprings@gmail.com. Thank you everyone!

In other news, **Dane County is developing a major extension of the CCT to McFarland, called the Lower Yahara River Trail (LYRT)**. The initial stage will connect the CCT at Lake Farm County Park to McDaniel Park in the village of McFarland. Construction begins in 2013, building a boardwalk across the northern shore of Lake Waubesa. Eventually, this trail will extend to Stoughton. We are excited for the completion of this beautiful trail, connecting the CCT to surrounding communities.

The Capital Off Road Pathfinders (CORP), Dane County's mountain biking organization, reached out to the International Mountain Bike Association (IMBA) for technical assistance on designing the trails at Dawley Park. IMBA promotes sustainable single track trails and provides hands-on training. **IMBA has donated \$5,000 in professional design services.** IMBA has 500 members in southern Wisconsin who are eager to start building trails.

FOCSRA BIKE COMMITTEE-JOIN US!

The CCT is the most utilized amenity of the entire Park, and it was rated the #1 bike trail in Madison by The Isthmus. Certainly, if you have been on the CCT on any given weekend, you know it is popular and greatly appreciated. **As such, we are excited to build an active and motivated FOCSRA Bike Committee.** The CCT deserves a focused volunteer group to support it and help the State, County, and local municipalities prioritize issues. On March 12, the Bike Committee held its first meeting to establish its goals, objectives and plans. We welcome anyone who wants to be a Friend of the CCT to attend the meetings and join the Committee. Please contact FOC-

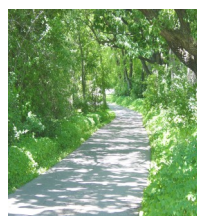
SRA at capsprings@gmail.com and indicate your interest in the FOCSRA Bike Committee.

FOCSRA BIKE COMMITTEE-INITIATIVES

The Bike Committee's major focus is raising funds to support the CCT and other trails. **The primary fund-raising vehicle is the sale of WI State Trail passes.** These passes allow bicyclists to use over 400 State trails. If FOSCRS sells the passes, it retains 20% of the sale, which will directly support the CCT and the LYRT. If you want to support FOSCRS, the CCT, and LYRT, please buy your WI Trail passes from FOCSRA. We have volunteers on the CCT selling passes, so please bring cash or a check on your next ride. Or, go online to www.fwsp.org/capitalsprings/ and link to the Buy Trail Pass page.

Our second initiative involved **Pinnacle Health Fitness**. They sponsored a two-hour indoor cycling class to benefit the CCT on March 31 at their Downtown location. FOCSRA also sold WI State Trail passes at the event. This was a great way to get ready to ride the CCT this spring. Thank you, Pinnacle and their Spinning coaches!

Our third and most ambitious program is developing a **CCT biking jersey**. If you ride the CCT, you need a jersey to show your support! We are working on the design, and we plan to sell both hi-tech bike jerseys and t-shirts with logos with all of FOSCRS's partners. We plan to have the design in time for National Trails Day, June 2.



Speaking of National Trails Day, FO-SRA will be on the CCT for **National Trails Day, June 2, at the Lussier Family Heritage Center**. Stop by and get the latest details on the trails, or just to chat! Later in the summer, we plan to host a **Bike Safety Rodeo**. With support of Dream Bikes of Madison, participants will have the opportunity to have their child's bike inspected by an expert bike mechanic. Watch for details.

PARK UNIT SPOTLIGHT: NINE SPRINGS E-WAY (625 ACRES) *By Clare Carlson*



A Study in Education, Ecological, Esthetic, and Environmental Values

We begin a new series in this newsletter, exploring the history, natural beauty, recreation, and future of a unit at Capital Springs.

HISTORY

In 1969, UW-Madison Professor Philip Lewis submitted a proposal to the National Endowment for the Arts for the development of an environmental study model to “show how a community can identify and capitalize on existing natural and manmade resources in an effort to elevate environmental, ecological, and esthetic planning decisions to a higher priority within the community development decision-making process”.

As a result of Professor Lewis’ vision, a seven-mile natural corridor along the south-central side of Madison was designated “The E-Way”, **a natural laboratory used for the study of education, ecological, esthetic and environmental values.** Running east from the shores of Lake Waubesa at Lake Farm Park, to the west at Dunn’s Marsh along Seminole Highway, the E-Way links large areas of wetland and sedge meadows, prairie, native forests, and many large springs flowing into Nine Springs Creek.

AMENITIES AND BEAUTY

We are especially fond of the E-Way, as most of the other Capital Springs Recreation Area units fall within the corridor. Thanks to the efforts of Dane County Parks, which has been responsible for acquiring and overseeing parcels of land within the E-Way since 1970, Cap Springs visitors have a great opportunity to enjoy



this large unit through a six-mile system of intricate trails. The Nine Springs E-Way trail, as part of the well-known Capital City Trail, is the key

path for enjoying the E-Way as it meanders through a variety of native habitats within the Park and Recreation Area. Visitors use the trail system for hiking, biking,

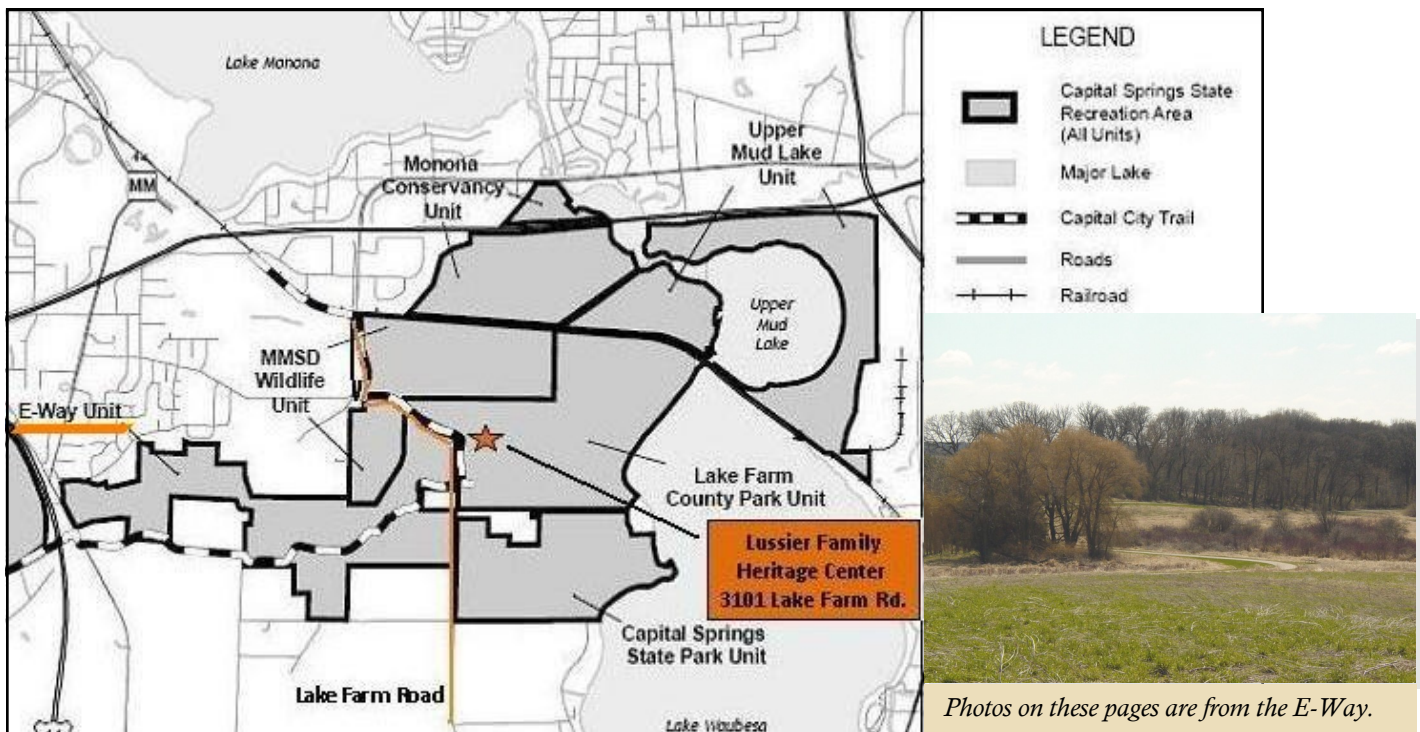
bird-watching, jogging, cross-country skiing, nature study for students, artistic pursuits, and more. Note the educational signage throughout the park as well. Located at 1947 Moorland Road near Lake Farm Park, the county also maintains a parking lot for its users.

In addition to this main trail, the E-Way also offers spur trails and a water trail along Nine Springs Creek.

- **A spur trail to Baxter Park** with a boardwalk to an existing clear span bridge over Nine Springs Creek for additional biking and hiking.
- **A spur trail connecting to Indian Springs** on which visitors may enjoy hiking and cross-country skiing on a mowed grass spur trail off of the Capital City Trail in the E-Way.
- **A northeast spur trail** also from the Capital City Trail offers a bridge that crosses the Nine Springs Creek and continues north and east, providing access to both Indian Springs and the trail to Baxter Park. Deer archery hunting is allowed by permit.
- **A water trail along Nine Springs Creek** is available within this unit. Take your canoe or kayak from the Yahara River near Lake Waubesa to County Road MM and Rimrock Road on the Nine Springs Creek. Two landings are available: one at the end of Anderberg Drive and County Road MM, and the second landing is off Mooreland Road at Capital Springs Park. A paddle trip is a wonderful way to explore the E-Way!

THE FUTURE

Future recreation uses within this unit include seasonal hunting limited to archery in designated areas and a general hunting area north of the Capital City Trail between U.S. Hwy 14 and Syene Road. Other possible uses include additional bicycling, hiking, and cross-country ski trails, community gardening, a dog exercise area, disc golf, scenic driving, and equestrian trail development.



Photos on these pages are from the E-Way.

THE FRIENDS OF CAPITAL SPRINGS REMEMBERS LIBBY LEWIS (1932-2012)

A Steward for Dane County and the E-Way

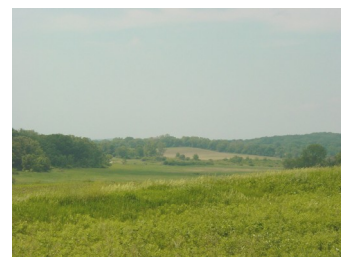
Elizabeth "Libby" Lewis passed away February 1, 2012. Bill Lunney, a FOCSRA Board Member, as well as current Dane County Parks Commission Chair and long time advocate for Dane County Parks, expressed the following sentiments about the significant contributions to Dane County Parks made by Libby Lewis, his colleague for over twenty years:

In her passing, we remember Libby Lewis and her contribution to protecting natural spaces in Dane County. Libby was a committed advocate for preserving the E-Way—an effort forged by her husband, Phil—which we now all enjoy as a central component of the Capital Springs Recreation Area. Her work contributed significantly to protecting the land and water resources of this important area. Libby played an important role in the establishment of the Lussier Family Heritage Area as well, also an important element within the Park.

In keeping with her dedication to natural spaces, Libby served on the Dane County Parks Commission for 26 years, always advocating for buying parkland and natural resource areas. Libby also founded the Friends of Dane County Parks, a foundation that has provided important financial support for park improvements through the years. The Dane County Board of Supervisors recognized her commitment by naming the County Parks Improvement Fund, the Lewis-Lunney Fund.

A staunch conservation advocate to the young, Libby also dedicated her time to environmental education, working with local schools as well as the Girl and Boy Scouts. She was a founding member of CRANES (Capital Region Advocacy Network for Environmental Sustainability), was employed as an ecologist, and a founding member of the Phil Lewis Academy of Sustainable Design. Dane County residents for generations to come will be in debt to Libby for her efforts to preserve our County's environmental quality.

We extend our condolences to Phil Lewis and Libby's family. A memorial service will be held on April 23, 2012 at Covenant Presbyterian Church in Madison.



CAPITAL SPRINGS RECREATION AREA INFORMATION

3101 LAKE FARM ROAD, MADISON, WI 53711

The Capital Springs Recreation Area just south of Madison encompasses about **2,500 acres** stretching from Fish Hatchery Road east to Lake Waubesa, including most of the Nine Springs E-way. There are many different areas of the park to explore, including the Lake Farm Park, the Jenni & Kyle Preserve, and Capital City State Trail which meanders through the park, connecting to other area bike trails and down town Madison. Stop by the Lussier Family Heritage Center for additional information and a map.



Capital Springs protects more than three-quarters of a mile of undeveloped Lake Waubesa shoreline.

Hiking and skiing trails, picnic shelters, a boat launch onto Lake Waubesa, rental bikes, water trail, and the Lake Farm Campground are just some of the activities and amenities available. For camping or picnic shelter reservations, contact Dane County Parks at 224-3730, or reserve campsites online at www.reservedane.com. For more information, contact Dane County Parks at Dane-Parks@CountyofDane.com.

Your support is vital to the continued growth and success of Capital Springs Recreation Area. Please consider volunteering your time, joining the **Friends of Capital Springs Recreation Area**, or sending a tax-deductible donation to the **Friends of Capital Springs Recreation Area, Inc.** All funds received go directly to park improvements and **Friends** initiatives. Thank you for your support and we hope to see you soon at the park!

Park Directions: From Madison or Interstate I-90, take the West Beltline (US Highway 12/18) to the South Towne Drive Exit (exit 264) and go south. Continue for almost one mile and then turn left on Moorland Road, which turns into Lake Farm Road after the road curves. The park is located about 1/4 mile past the curve at 3101 Lake Farm Road. You'll see the Lussier Family Heritage Center and campground on your left.

*The Capital Springs Newsletter is published by volunteers of the **Friends of Capital Springs Recreation Area, Inc.** as a benefit to its members.*

Friends Board of Directors: Matt Carlson, President; Bruce Lindsay, Vice-President; Judie Pfeifer, Treasurer; Bill Lunney, Secretary; Dan Kerkman.

Dane County Liaison: Linda Mittnacht

Park Manager and DNR Liaison: Kevin Swenson

Dane County Volunteer Coordinator: Rhea Stangel-Maier

Newsletter Editor/Designer: Clare L. Carlson



Friends of Capital Springs Recreation Area, Inc.
3101 Lake Farm Road
Madison, WI 53711