

Guide to Prairie Pollinators and other Insects*

☼→☼ = pollinator



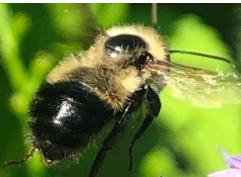
Common Eastern Bumble Bee,
Bombus impatiens
☼→☼
Social bee



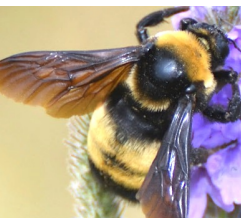
Two-spotted Bumble Bee,
Bombus bimaculatus ☼→☼
Social bee
Photo: Jay Watson,
WI Bumble Bee Brigade



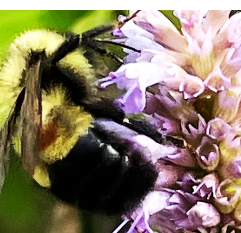
Yellow Bumble Bee,
Bombus fervidus
☼→☼
Social bee, imperiled species in WI (S2 status). Rare.



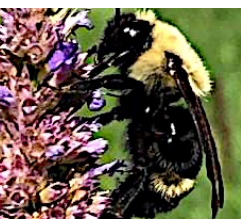
Half-black Bumble Bee,
Bombus vagans
☼→☼ Social bee



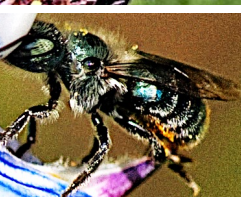
Black and Gold Bumble Bee,
Bombus auricomus
☼→☼ Social bee
Photo: Jay Watson,
WI Bumble Bee Brigade



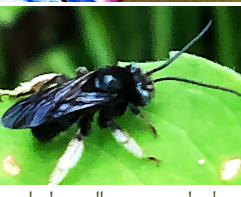
Rusty-patched Bumble Bee,
Bombus affinis
☼→☼ Social bee,
federally endangered species, critically impaired in WI (S1 status). Rare.



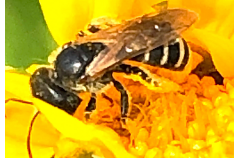
Lemon Cuckoo Bumble Bee,
Bombus citrinus
☼→☼
Parasitic bee,
vulnerable in WI (S3 status).



Mason Bee,
Osmia sp. ☼→☼
Solitary bee
Photo: © Heather Holm
pollinatorsnativeplants.com



Long-horned Bee,
Melissodes bimaculatus
☼→☼ Solitary bee



Sweat Bee,
Halictus sp.
☼→☼ Solitary,
communal bee



Green Sweat Bee,
Agapostemon sp.
☼→☼ Solitary,
communal bee



Mining Bee,
Andrena sp. ☼→☼
Solitary bee



Leafcutter Bee,
Megachile sp. ☼→☼
Solitary bee
Photo: © Heather Holm
pollinatorsnativeplants.com



Carder Bee,
Anthidium sp.
☼→☼ Solitary bee
Photo: © Heather Holm
pollinatorsnativeplants.com



Small Carpenter Bee,
Ceratina sp.
☼→☼ Solitary bee
Photo: © Heather Holm
pollinatorsnativeplants.com



Honey Bee,
Apis Mellifera ☼→☼
Social bee, introduced,
non-native species.



Bee Fly,
Bombylius sp. ☼→☼
Photo: Jon Yuschock,
Bugwood.org



Orange-legged Drone Fly,
Eristalis flavipes
☼→☼
Syrphid (flower) fly &
bumble bee mimic



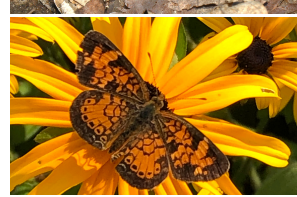
Syrphid (Flower) Fly,
Eristalis sp. ☼→☼



Soldier Fly,
Odontomyia sp.
☼→☼
Photo: © Heather Holm
pollinatorsnativeplants.com



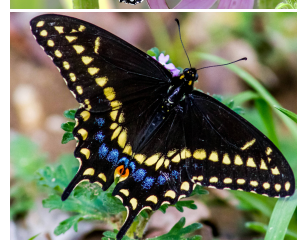
Mourning Cloak Butterfly,
Nymphalis antiopa
☼→☼ Hibernates in
WI as an adult.



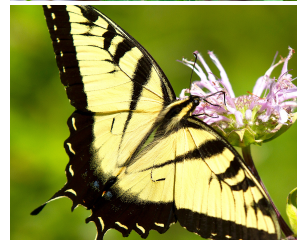
Crescent Butterfly,
Phyciodes sp. ☼→☼
Small, common
butterfly.



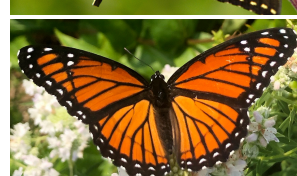
Monarch Butterfly,
Danaus plexippus
☼→☼ Long-distance
migratory insect.



Black Swallowtail Butterfly,
Papilio polyxenes
☼→☼



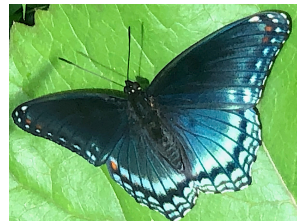
Eastern Tiger Swallowtail Butterfly,
Papilio glaucus
☼→☼
Females can be in a
yellow or black morph.



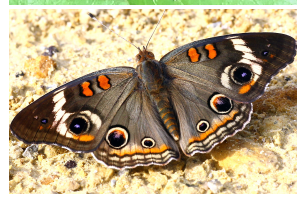
Viceroy Butterfly,
Limenitis archippus
☼→☼ Monarch mimic,
distinguished by band on
lower wings.



Red Admiral Butterfly,
Vanessa atalanta
☼→☼ May
overwinter as an adult
in Southern WI.



Red-spotted Purple Butterfly,
Limenitis arthemis astyanax
☼→☼



Common Buckeye Butterfly,
Junonia coenia
☼→☼

*Includes pollinators and other insects in all prairies within the 2,500-acre Capital Springs Recreation Area.

Guide to Prairie Pollinators and other Insects*

☼→☼ = pollinator



Least Skipper Butterfly, *Ancyloxypha numitor*
☼→☼



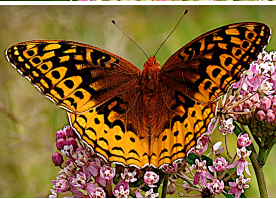
Silver-spotted Skipper Butterfly, *Epargyreus clarus*
☼→☼



Fiery Skipper Butterfly, *Hylephila phyleus*
☼→☼



Painted Lady Butterfly, *Vanessa cardui*
☼→☼



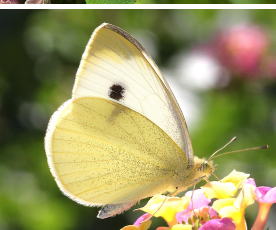
Great Spangled Fritillary Butterfly, *Speyeria cybele* ☼→☼
Photo: Jon Yuschock, Bugwood.org



Common Wood Nymph, *Cercyonis pegala*
☼→☼



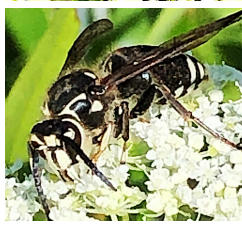
Clouded Sulphur Butterfly, *Colias philodice*
☼→☼
Photo: David Cappaert, Bugwood.org



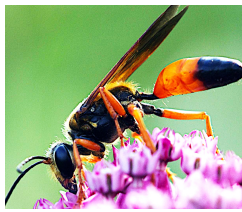
Cabbage White Butterfly, *Pieris rapae*
☼→☼
Introduced, non-native species



Great Black Wasp, *Spheg pensylvanicus*
☼→☼ Solitary wasp



Bald-faced Hornet, *Dolichovespula* sp.
☼→☼ Social wasp



Great Golden Digger Wasp, *Spheg ichneumonaeus*
☼→☼ Solitary wasp
Photo: David Cappaert, Bugwood.org



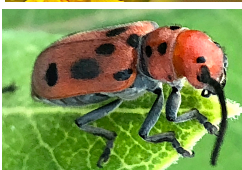
Bent-shielded Besieger Wasp, *Gnamptopelta obsidianator* ☼→☼
Parasitoid wasp



Blister Beetle, *Zonitis* sp. ☼→☼



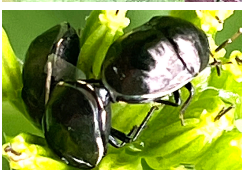
Goldenrod Soldier Beetle, *Chauliognathus pensylvanicus* ☼→☼
Photo: David Cappaert, Bugwood.org



Red Milkweed Beetle, *Tetraopes* sp.
☼→☼



Large Milkweed Beetle, *Oncopeltus fasciatus*
☼→☼



Ebony Bug, *Corimelaena* sp.
☼→☼



Japanese beetle, *Popillia japonica*
Introduced, non-native species



Virginia Ctenucha Moth, *Ctenucha virginica*
☼→☼



Snowberry Clearwing Moth, *Hemaris diffinis*
☼→☼
Bumble bee mimic



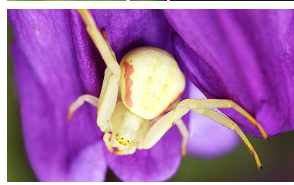
Grapeleaf Skeletonizer Moth, *Harrisina americana*
☼→☼ Photo: David Cappaert, Bugwood.org



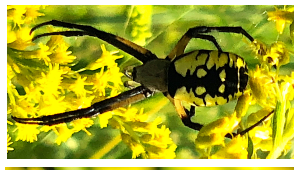
Carolina Locust, *Dissosteira carolina*
Band-winged, short-horned grasshopper



Top photo, resting: Kansas Department of Agriculture, Bugwood.org



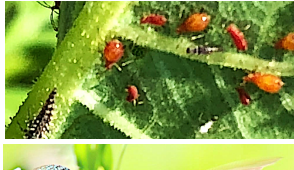
Bottom photo, in-flight: Edward L. Manigault, Clemson University Donated Collection, Bugwood.org



Crab Spider**, Family Thomisidae
Small spider



Yellow Garden Spider**, *Argiope aurantia*
Large spider



Ants, Family Formicidae, ☼→☼
Ants improve prairie soil fertility and cycle nutrients. Photo: David Cappaert, Bugwood.org



Aphids, *Uroleucon* sp. Aphids provide food for some ant species called honeydew.

Ruby-throated Hummingbird, *Archilochus colubris*
☼→☼ Selects nectar from red or orange flowers. Also eats spiders & insects.

This guide was developed by the Friends of Capital Springs Recreation Area and made possible by a grant from the Foundation for Dane County Parks. Find the Friends: www.friendsofcapitalsprings.org | capssprings@gmail.com | Facebook



*Includes all prairies within the 2,500-acre Capital Springs Recreation Area. **Spiders are not insects - they belong to a class called arachnids. All are exclusively predatory, using a prairie to find insect prey. PAGE 2