

Guide to Prairie Pollinators and other Insects*



Common Eastern Bumble Bee,
Bombus impatiens
☼→☼ Social bee, WI status: S5 (secure).



Two-spotted Bumble Bee, ☼→☼
Bombus bimaculatus -
Social bee, WI status: S4 (apparently secure, but with possible cause for concern).



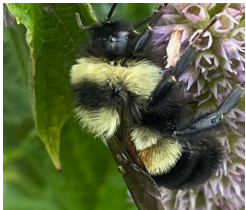
Yellow Bumble Bee,
Bombus fervidus
☼→☼ Social bee, WI status: S2 (imperiled).



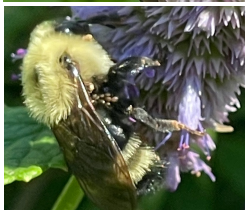
Half-black Bumble Bee, *Bombus vagans*
☼→☼ Social bee, WI status: S4 (apparently secure, but with possible cause for concern).



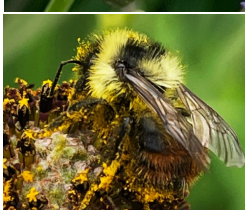
Black and Gold Bumble Bee,
Bombus auricomus
☼→☼ Social bee, WI status: S3 (vulnerable).



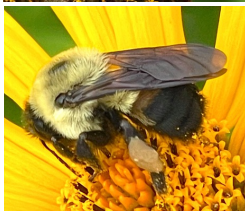
Rusty-patched Bumble Bee, *Bombus affinis* ☼→☼ Social bee, federally endangered species, WI status: S1 (critically impaired).



Lemon Cuckoo Bumble Bee,
Bombus citrinus ☼→☼
Social parasite, WI status: S3 (vulnerable).



Redbelted Bumble Bee, *Bombus rufocinctus* ☼→☼ Social bee, WI status: S4 (apparently secure, but with possible cause for concern).



Brownbelted Bumble Bee, *Bombus griseocollis* ☼→☼ Social bee, WI status: S4 (apparently secure, but with possible cause for concern).



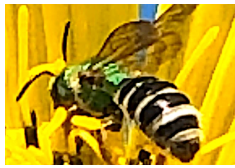
Mason Bee,
Osmia sp. ☼→☼
Solitary bee.
Photo: © Heather Holm
pollinatorsnativeplants.com



Leafcutter Bee,
Megachile sp.
☼→☼ Solitary bee



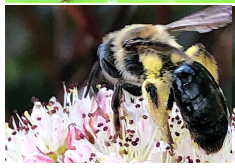
Sweat Bee,
Halictus sp. ☼→☼
Solitary, communal bee.



Green Sweat Bee,
Agostemon sp.
☼→☼ Solitary, communal bee



Long-horned Bee,
Melissodes bimaculatus
☼→☼ Solitary bee



Mining Bee,
Andrena sp. ☼→☼
Solitary bee



Small Carpenter Bee, *Ceratina* sp.
☼→☼ Solitary bee
Photo: © Heather Holm
pollinatorsnativeplants.com



Eastern (large) Carpenter Bee,
Xylocopa virginica ☼→☼
Solitary or social Photo: © Wayne Owen



Honey Bee,
Apis Mellifera ☼→☼
Social bee, introduced, non-native species.



Bee Fly,
Bombylius sp.
☼→☼ Photo: Jon Yuschok, Bugwood.org



Orange-legged Drone Fly,
Eristalis flavipes ☼→☼
Syrphid (flower) fly & bumble bee mimic



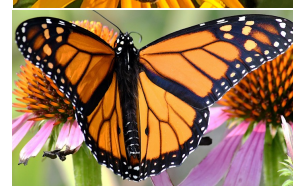
Soldier Fly,
Odontomyia sp.
☼→☼
Photo: © Heather Holm
pollinatorsnativeplants.com



Syrphid (Flower) Fly,
Eristalis sp. ☼→☼
Great pollinators



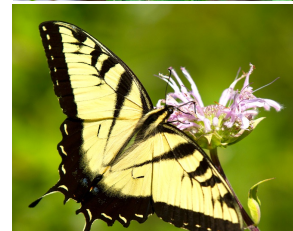
Crescent Butterfly,
Phyciodes sp. ☼→☼
Small, common butterfly.



Monarch Butterfly,
Danaus plexippus
☼→☼ Long-distance migratory insect.



Black Swallowtail Butterfly, *Papilio polyxenes*
☼→☼



Eastern Tiger Swallowtail Butterfly, *Papilio glaucus*
☼→☼
Females can be in a yellow or black morph.



Viceroy Butterfly, *Limnitis archippus*
☼→☼ Monarch mimic, distinguished by band on lower wings.



Red Admiral Butterfly, *Vanessa atalanta*
☼→☼ May overwinter as an adult in Southern WI.



Common Buckeye Butterfly, *Junonia coenia*
☼→☼

*Includes pollinators and other insects found in prairies within the Capital Springs Recreation Area The symbol ☼→☼ indicates that the animal is a plant pollinator.

Guide to Prairie Pollinators and other Insects*



Least Skipper Butterfly,
Ancyloxypha numitor
☼→☼



Great Black Digger Wasp, *Sphex pensylvanicus*
☼→☼ Solitary wasp



Virginia Ctenucha Moth, *Ctenucha virginica*
☼→☼ Feeds during the day, unlike most moths.



Silver-spotted Skipper Butterfly,
Epargyreus clarus
☼→☼



Great Golden Digger Wasp, *Sphex ichneumoneus*
☼→☼ Solitary wasp
Photo: David Cappaert, Bugwood.org



Snowberry Clearwing Moth, *Hemaris diffinis*
☼→☼
Bumble bee mimic that may feed during the day.



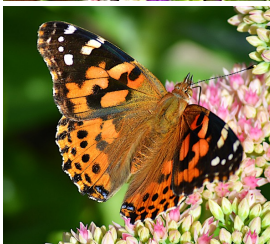
Fiery Skipper Butterfly,
Hylephila phyleus
☼→☼



Bent-shielded Besieger Wasp, *Gnamptopelta obsidianator*
☼→☼
Parasitoid wasp



Hummingbird Clearwing Moth, *Hemaris thysbe*
☼→☼
Feeds during the day.
Photo: Mike Boone.



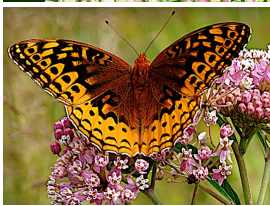
Painted Lady Butterfly, *Vanessa cardui*
☼→☼



Swamp Milkweed Leaf Beetle, *Labidomera clivicollis*
☼→☼



Carolina Grasshopper
Dissosteira carolina
Common band-winged, short-horned grasshopper that feeds on grasses and forbs.
Top photo, resting: Kansas Dept of Agriculture, **Bottom photo, in-flight:** Edward L. Manigault, Clemson Un.
Both from Bugwood.org



Great Spangled Fritillary Butterfly, *Speyeria cybele*
☼→☼
Photo: Jon Yuschock, Bugwood.org



Goldenrod Soldier Beetle, *Chauliognathus pensylvanicus*
☼→☼
Photo: David Cappaert, Bugwood.org



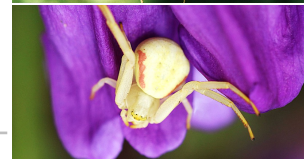
Goldenrod Crab Spider, *Misumena vatia***



Cabbage White Butterfly, *Pieris rapae*
☼→☼
Introduced, non-native species.



Red Milkweed Beetle, *Tetraopes* sp.
☼→☼



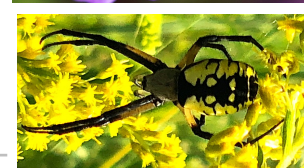
Yellow Garden Spider**, *Argiope aurantia*
Large spider



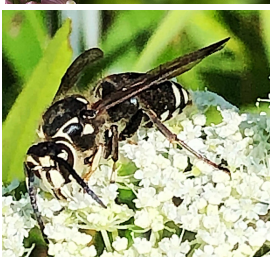
Clouded Sulphur Butterfly, *Colias philodice*
☼→☼
Photo: David Cappaert, Bugwood.org



Japanese Beetle, *Popillia japonica*
Introduced, non-native species



Ants, Family Formicidae, ☼→☼
Ants improve prairie soil fertility & cycle nutrients.
Photo: David Cappaert, Bugwood.org



Bald-faced Hornet, *Dolichovespula* sp.
☼→☼ Social wasp



Ebony Bugs, *Corimelaena* sp.
☼→☼



Aphids, *Uroleucon* Sp. Aphids provide honeydew food for some ant species.



Large Milkweed Bugs, *Oncopeltus fasciatus*
☼→☼



Ruby-throated Hummingbird, *Archilochus colubris*
☼→☼ Selects nectar from red or orange flowers. Also eats spiders & insects.



Grapeleaf Skeletonizer Moth, *Harrisina americana*
☼→☼ Photo: David Cappaert, Bugwood.org

*Includes pollinators and other insects found in prairies within the Capital Springs Recreation Area **Spiders are not insects but rather arachnids and exclusively predatory. They hunt in prairie.

The symbol ☼→☼ indicates that the animal is a plant pollinator.